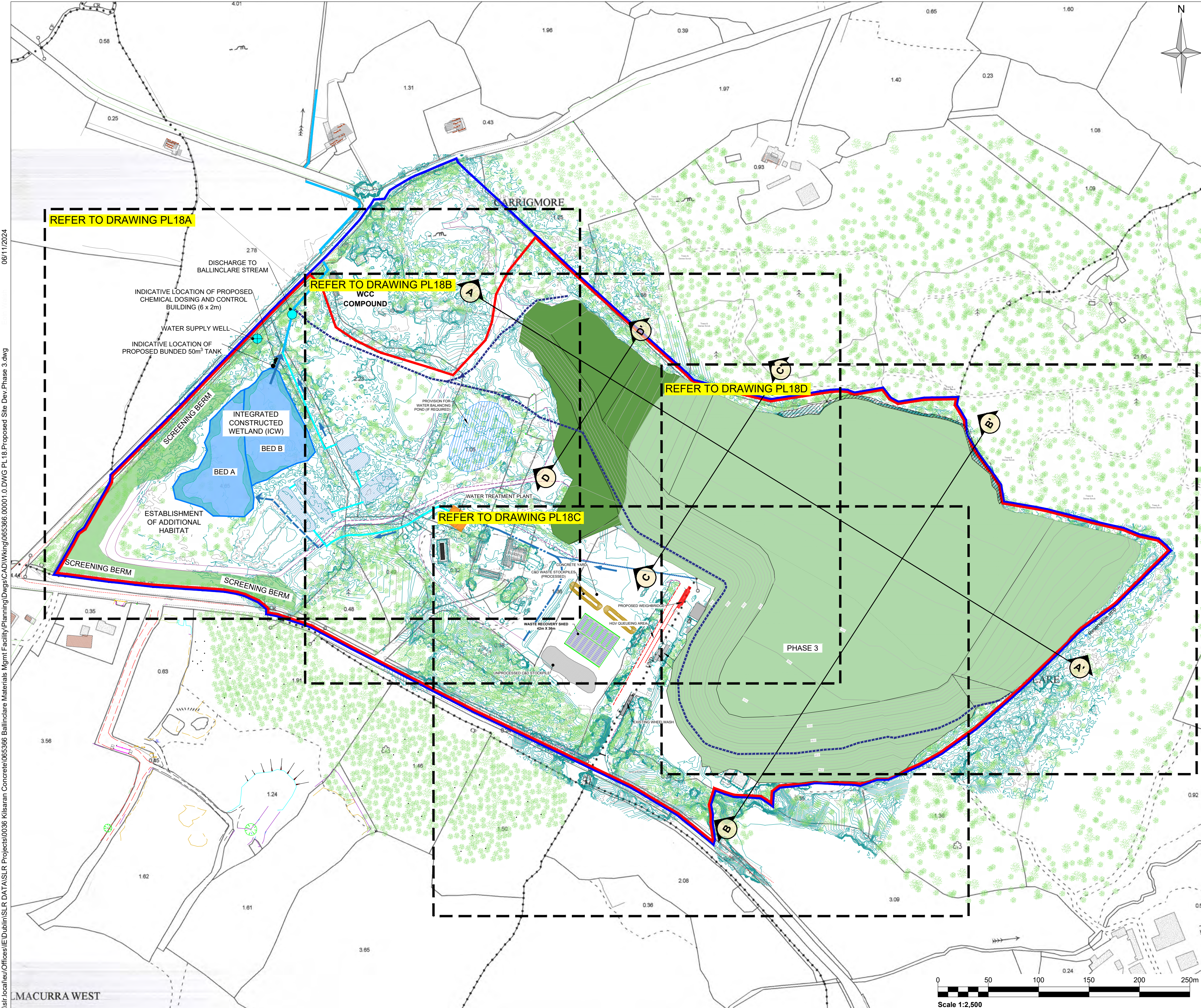


06/11/2024

\\slr.local\eu\Offices\IE\Dublin\SLR DATA\SLR Projects\0036 Kilsaran Concrete\065366 Ballinclare Materials Mgmt Facility\Planning\Drawings\CAD\Wking\065366 00001.0.DWG PL18 Proposed Site Dev Phase 3.dwg



- Notes:**
1. EXTRACT FROM ORDNANCE SURVEY 1:2,500 / 1:5,000 MAP SERIES: 4137-B & 4137-D.
 2. EXISTING SITE SURVEY (MAY 2016) PROVIDED BY KILSARAN CONCRETE.
 3. CONTOURS SHOWN ARE INDICATIVE ONLY.

- Legend:**
- LAND INTEREST BOUNDARY (c. 36.0 HA)
 - PLANNING APPLICATION AREA (c. 32.6 HA)
 - EXISTING CONTOURS
 - INTEGRATED CONSTRUCTED WETLAND (ICW)
 - PUMPED SURFACE WATER RUN-OFF FROM QUARRY FLOOR / INERT LANDFILL CELLS
 - DISCHARGE FLOW DIRECTION
 - PROVISION FOR TEMPORARY STORMWATER DRAINAGE CHANNEL (IF REQUIRED)
 - AREA OF QUARRY FACE RETAINED FOR PEREGRINE FALCON

Rev	Amendments	Date	By	Chk	Auth
 www.slrconsulting.com					
Drawing Status & Suitability Code FINAL					
Client KILSARAN CONCRETE Ballinclare Quarry, Kilbride, Co. Wicklow.					
Project PLANNING APPLICATION Materials Recovery / Recycling Facility and Inert Landfill					
Drawing Title PROPOSED SITE DEVELOPMENT PHASE 3 - COMPLETED LANDFORM					
Scale 1:2,500 @ A2		SLR Project No. 065366.00001			
Designed EW	Drawn EW	Checked DL	Authorised DL		
Date 10/24	Date 10/24	Date 10/24	Date 10/24		
Drawing Number DRAWING PL18					Rev. 0